
Model AFCHCP2-7SL

Slim Line-Dual Temperature NSF-7 Hot & Refrigerated Cold Pans

Model

AFCHCP2-7SL

AFCHCP3-7SL

AFCHCP4-7SL

STANDARD FEATURES

- ☑ 3" recessed top edge to comply with NFS-7 requirements
- ☑ Single control for changing from hot to cold operation
- ☑ Slim line drop-in design for narrow counters
- ☑ Easy access temperature & function control panel attached to a 24" long flexible conduit for optional counter mounting
- ☑ Self contained drop-in design
- ☑ Holds standard 12" by 20" food pans and fractional sized pans
- ☑ Stainless steel top and liner for maximum strength and durability
- ☑ 1" drains for ease of cleaning
- ☑ Type 134A or 404A CFC free refrigerant
- ☑ Fully insulated, CFC free, foamed-in place insulation keeps food cold while saving energy
- ☑ Recessed ledge for pan support and colder, fresher products
- ☑ Quick & easy service with sight glass, service valves, filter/dryer and receiver
- ☑ Limited 1 year parts and labor warranty
- ☑ Adapter bars provided for food pans

OPTIONS & ACCESSORIES

- ☑ Perforated bottom strainer plate conveniently holds ice above drain to prevent clogging
- ☑ Adaptor bars for fractional sized pans
- ☑ Remote on/off switch
- ☑ 220/230/240V
- ☑ 50 cycle
- ☑ Remote models with or without condensing units

DESCRIPTION

USECO Dual Temperature Hot & Refrigerated Drop-In Cold Pans are two units in one; from a heated Bain Marie to a refrigerated cold pan with the flip of a switch. All models are completely self-contained in 2, 3 or 4 well models are CFC free and are recessed 3" to comply with NSF-7 performance requirements. Designed for narrow counters.

SPECIFICATIONS

Exterior – One-piece top flange and coved-corner interiors constructed of 18 gauge stainless steel. Exterior body constructed of heavy gauge, corrosion resistant steel. Condensing unit mounted on corrosion resistant frame below the cold pan.

Interior – CFC free foamed-in-place insulation through-out, 1" drain located in the center for easy cleaning. Ledge is recessed 3" to comply with NSF-7 requirements, allowing a layer of air to insulate food and for pan support.

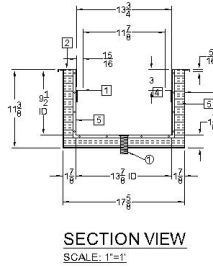
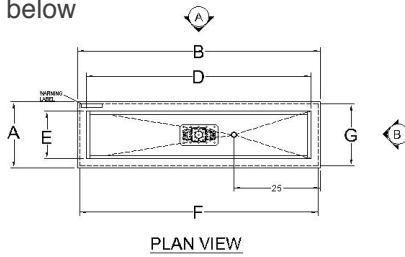
Refrigeration – Air cooled, type 134A or 404A CFC free refrigerant system featuring wrapped coil construction on both sides and bottom, individual thermostats, on/off switch, 8 ft. cord and plug set NEMA 5-15P (120V models). Refrigeration system features sight glass, easy service valves, dryer/filter and receiver.

Heating - Automatic water-fill with high-limit protection featuring a water sensor and solenoid valve to maintain proper water levels. And efficient electric immersion heating system transfers heat directly to the water while a positive-off thermostat controls provides adjustable and consistent temperatures. Designed for wet operation only.



Model AFCHCP3-7SL

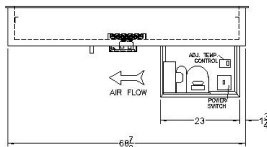
shown below



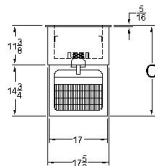
Note: Specifications are subject to change without notice and are not intended for installation purposes. See installation instructions prior to installing the unit.



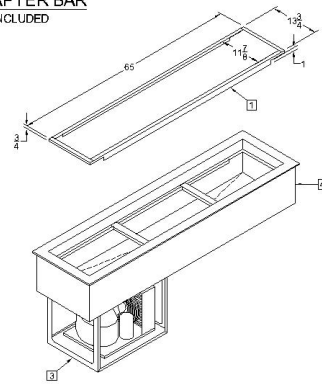
ADAPTER BAR
(2) INCLUDED



ELEVATION - A
OPERATOR SIDE



ELEVATION - B



ISOMETRIC

SPECIFICATIONS

Model Number	OVERALL DIMENSIONS			INTERIOR DIMENSIONS		CUT OUT DIMENSIONS	
	A Front to Back Inches (MM)	B Left to Right Inches (MM)	C Height Inches (MM)	D Front to Back Inches (MM)	E Left to Right Inches (MM)	F Front to Back Inches (MM)	G Left to Right Inches (MM)
AFCHCP2-7SL	19-1/8 (485)	48-3/4 (1238)	26-1/8 (667)	43-1/2 (1114)	13-7/8 (353)	47-1/2 (1207)	17-7/8 (454)
AFCHCP3-7SL	19-1/8 (485)	70-3/8 (1788)	26-1/8 (667)	65-1/8 (1654)	13-7/8 (353)	69-1/8 (1756)	17-7/8 (454)
AFCHCP4-7SL	19-1/8 (485)	92 (2337)	26-1/8 (667)	86-3/4 (2204)	13-7/8 (353)	90-3/4 (2305)	17-7/8 (454)

SHIPPING INFORMATION

Model Number	WEIGHTS		CARTON DIMENSIONS			CRATE SIZE	
	SHIPPING WEIGHT POUNDS (KG)	INSTALLED WEIGHT POUNDS (KG)	WIDTH Inches (MM)	DEPTH Inches (MM)	HEIGHT Inches (MM)	CUBIC FEET	CUBIC METERS
AFCHCP2-7SL	220 (100)	190 (87)	29 (737)	34 (864)	32 (813)	18.26	0.52
AFCHCP3-7SL	240 (109)	210 (96)	29 (737)	48 (1220)	32 (813)	25.78	0.73
AFCHCP4-7SL	275 (125)	240 (109)	29 (737)	62 (1575)	32 (813)	33.3	0.94

POWER SUPPLY

Model Number	VOLTS	WATTS	AMPS	PHASE	POWER SUPPLY
AFCHCP2-7SL	208/240	1.9/2.5	9.0/10.4	SINGLE	*
AFCHCP3-7SL	208/240	3.0/4.0	14.4/16.7	SINGLE	*
AFCHCP4-7SL	208/240	3.8/5.0	18.1/20.8	SINGLE	*

POWER SUPPLY- REFRIGERATION OPERATION

Model Number	VOLTS	HP	AMPS	PHASE	POWER SUPPLY	REFRIGERANT
AFCHCP2-7SL	115	1/4	4.9	SINGLE	*	134A
AFCHCP3-7SL	115	1/3	5.6	SINGLE	*	404A
AFCHCP4-7SL	115	1/2	6.4	SINGLE	*	404A

* All model permanently field wired connected. Power supply single phase, 3-wire, 120/208-240V, L2-N 120VAC

*All AFCHCP models feature automatic water fill systems and require a water supply connection. Please refer to the operator's manual and installation instructions for details.