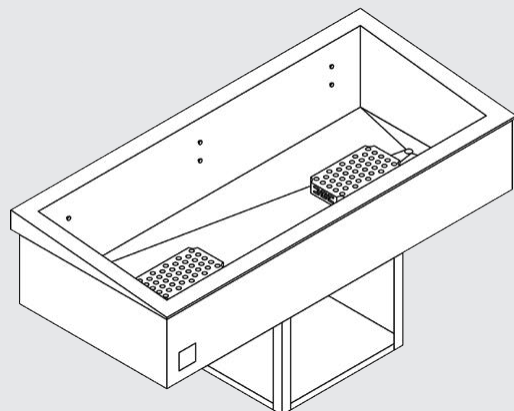



**MAX-FRESH**  
**HOT/COLD SYSTEMS**

**Model ASCHP4-ST**

## Dual Temperature NSF-7 Hot & Refrigerated Cold Pans With Slope Top

### Model

AFCHCP1-7ST

AFCHCP2-7ST

AFCHCP3-7ST

AFCHCP4-7ST

AFCHCP5-7ST

AFCHCP6-7ST

### STANDARD FEATURES

- ❑ 3" recessed top edge to comply with NFS-7 requirements
- ❑ Single control for changing from hot to cold operation
- ❑ Pans are raised in the rear for improved visibility and access to food products
- ❑ Easy access temperature & function control panel attached to a 24" long flexible conduit for optional counter mounting
- ❑ Self contained drop-in design
- ❑ Hold standard 12" by 20" food pans and fractional sized pans
- ❑ Stainless steel top and liner for maximum strength and durability
- ❑ 1" drains for ease of cleaning
- ❑ Type 134A or 404A CFC free refrigerant
- ❑ Fully insulated, CFC free, foamed-in place insulation keeps food cold while saving energy
- ❑ Recessed ledge for pan support and colder, fresher products
- ❑ Quick & easy service with sight glass, service valves, filter/dryer and receiver
- ❑ Limited 1 year parts and labor warranty
- ❑ Adapter bars provided for food pans

### OPTIONS & ACCESSORIES

- ❑ Perforated bottom strainer plate conveniently holds ice above drain to prevent clogging
- ❑ Adaptor bars for fractional sized pans
- ❑ Remote on/off switch
- ❑ 220/230/240V
- ❑ 50 cycle
- ❑ Remote models with or without condensing units

### DESCRIPTION

USECO Dual Temperature Hot & Refrigerated Drop-In Cold Pans are two units in one; from a heated Bain Marie to a refrigerated cold pan with the flip of a switch. All models are completely self-contained in one to six-well models are CFC free and are recessed 3" to comply with NSF-7 performance requirements. The sloped top provides users with improved visibility and access to food products.

### SPECIFICATIONS

**Exterior** – One-piece top flange and coved-corner interiors constructed of 18 gauge stainless steel. Exterior body constructed of heavy gauge, corrosion resistant steel. Condensing unit mounted on corrosion resistant frame below the cold pan.

**Interior** – CFC free foamed-in-place insulation through-out, 1" drain located in the center for easy cleaning. Ledge is recessed 3" to comply with NSF-7 requirements, allowing a layer of air to insulate food and for pan support.

**Refrigeration** – Air cooled, type 134A or 404A CFC free refrigerant system featuring wrapped coil construction on both sides and bottom, individual thermostats, on/off switch, 8 ft. cord and plug set NEMA 5-15P (120V models). Refrigeration system features sight glass, easy service valves, dryer/filter and receiver.

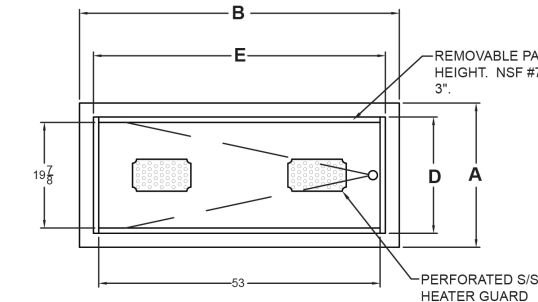
**Heating** - Automatic water-fill with high-limit protection featuring a water sensor and solenoid valve to maintain proper water levels. And efficient electric immersion heating system transfers heat directly to the water while a positive-off thermostat controls provides adjustable and consistent temperatures. Designed for wet operation only.



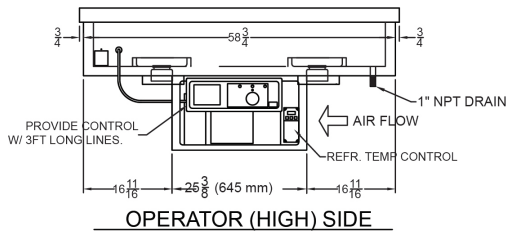
USECO 735 Florence Road, Savannah, TN 38372  
 (800) 251-3398 / Fax 731-925-2840 / www.useco.com

## Model AFCHP4-7ST

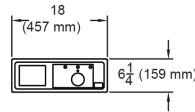
shown below



PLAN VIEW



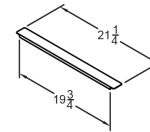
OPERATOR (HIGH) SIDE



CONTROL PANEL

REFER TO INSTALLATION INSTRUCTIONS FOR REMOTE MOUNTING.

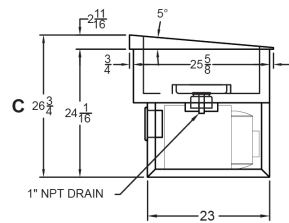
NOTE: CONTROLS LOCATED ON OPERATOR (HIGH SIDE)



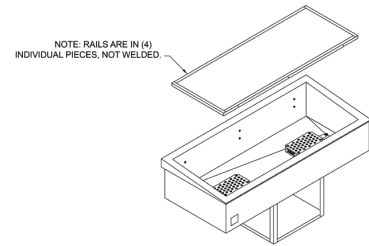
PAN DIVIDER

(THREE INCLUDED)

**Note:** Specifications are subject to change without notice and are not intended for installation purposes. See installation instructions prior to installing the unit.



SIDE VIEW



ISOMETRIC VIEW

## SPECIFICATIONS

Model Number	OVERALL DIMENSIONS			INTERIOR DIMENSIONS		CUT OUT DIMENSIONS	
	A Front to Back Inches (MM)	B Left to Right Inches (MM)	C Height Inches (MM)	D Front to Back Inches (MM)	E Left to Right Inches (MM)	F Front to Back Inches (MM)	G Left to Right Inches (MM)
AFCHCP1-7ST	27-1/8 (689)	19-1/8 (486)	28-1/4 (718)	21-7/8 (555)	13-7/8 (352)	25-7/8 (657)	17-7/8 (451)
AFCHCP2-7ST	27-1/8 (689)	32-3/4 (832)	28-1/4 (718)	21-7/8 (555)	27-1/2 (699)	25-7/8 (657)	31-1/2 (800)
AFCHCP3-7ST	27-1/8 (689)	46-1/2 (1181)	28-1/4 (718)	21-7/8 (555)	41-1/4 (1048)	25-7/8 (657)	45-1/4 (1149)
AFCHCP4-7ST	27-1/8 (689)	60-1/4 (1530)	28-1/4 (718)	21-7/8 (555)	55 (1397)	25-7/8 (657)	59 (1499)
AFCHCP5-7ST	27-1/8 (689)	74 (1880)	28-1/4 (718)	21-7/8 (555)	68-3/4 (1747)	25-7/8 (657)	72-3/4 (1847)
AFCHCP6-7ST	27-1/8 (689)	87-3/4 (2229)	28-1/4 (718)	21-7/8 (555)	82-1/2 (2096)	25-7/8 (657)	86-1/2 (2197)

## SHIPPING INFORMATION

Model Number	WEIGHTS		CARTON DIMENSIONS			CRATE SIZE	
	SHIPPING WEIGHT POUNDS (KG)	INSTALLED WEIGHT POUNDS (KG)	WIDTH Inches (MM)	DEPTH Inches (MM)	HEIGHT Inches (MM)	CUBIC FEET	CUBIC METERS
AFCHCP1-7ST	175 (80)	150 (69)	21 (533)	29 (737)	32 (813)	11.3	0.31
AFCHCP2-7ST	220 (100)	190 (87)	29 (737)	34 (864)	32 (813)	18.3	0.52
AFCHCP3-7ST	240 (109)	210 (96)	29 (737)	48 (1219)	32 (813)	25.8	0.73
AFCHCP4-7ST	275 (125)	240 (109)	29 (737)	62 (1575)	32 (813)	33.3	0.94
AFCHCP5-7ST	298 (136)	255 (116)	29 (737)	76 (1930)	32 (813)	41.0	1.16
AFCHCP6-7ST	320 (146)	275 (125)	29 (737)	89 (2261)	32 (813)	47.8	1.35

## POWER SUPPLY

Model Number	VOLTS	KW	AMPS	PHASE	POWER SUPPLY
AFCHCP1-7ST	208/240	1.9/2.5	9.0/10.4	SINGLE	*
AFCHCP2-7ST	208/240	1.9/2.5	9.0/10.4	SINGLE	*
AFCHCP3-7ST	208/240	3.0/4.0	14.4/16.7	SINGLE	*
AFCHCP4-7ST	208/240	3.8/5.0	18.1/20.8	SINGLE	*
AFCHCP5-7ST	208/240	6.0/8.0	28.9/33.3	SINGLE	*
AFCHCP6-7ST	208/240	6.0/8.0	28.9/33.3	SINGLE	*

## POWER SUPPLY- REFRIGERATION OPERATION

Model Number	VOLTS	HP	AMPS	PHASE	POWER SUPPLY	REFRIGERANT
AFCHCP1-7ST	115	1/4	4.9	SINGLE	*	134A
AFCHCP2-7ST	115	1/4	4.9	SINGLE	*	134A
AFCHCP3-7ST	115	1/3	5.6	SINGLE	*	404A
AFCHCP4-7ST	115	1/2	6.4	SINGLE	*	404A
AFCHCP5-7ST	115	3/4	15.2	SINGLE	*	404A
AFCHCP6-7ST	115	3/4	15.2	SINGLE	*	404A

\* All model permanently field wired connected. Power supply single phase, 3-wire, 120/208-240V, L2-N 120VAC

\*All AFCHCP models feature automatic water fill systems and require a water supply connection. Please refer to the operator's manual and installation instructions for details.