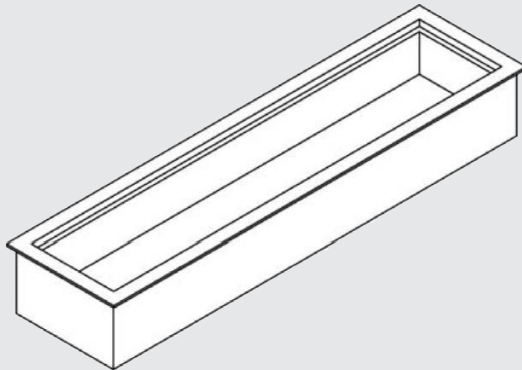




MAX-FRESH
HOT/COLD SYSTEMS



Model ICP-300SL

Ice Pans-Slim Line Non-Refrigerated Cold Pans

Model

ICP-200SL

ICP-300SL

ICP-400SL

STANDARD FEATURES

- Drop-in design
- NSF-2 compliant
- Hold standard 12" by 20" food pans and fractional sized pans
- 18 gauge stainless steel top and liner for maximum strength and durability
- 1" drains per well for ease of cleaning
- Perforated bottom strainer plate conveniently holds ice above drain for ease of cleaning
- CFC free fully insulated
- Foamed-in place insulation keeps food cold while saving energy
- Recessed ledge for pan support and colder, fresher products
- Limited 1 year parts and labor warranty
- Designed for narrow counters
- Available in 2, 3 or 4 well models

OPTIONS & ACCESSORIES

- Divider bars for fractional pans

DESCRIPTION

USECO Slim Line Non-Refrigerated Drop-In Ice Pans are designed for narrow counters and to hold pre-chilled food products at serving temperatures. All models are completely self-contained and available in two, three or four well models featuring CFC free insulation. Recessed top ledges lowers inset pans; keeping food colder and fresher and meet NSF-2 guidelines.

SPECIFICATIONS

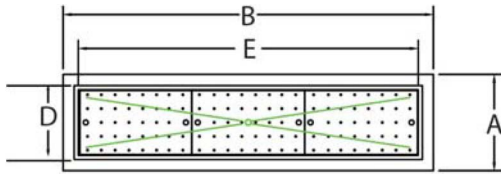
Exterior - One-piece top flange and coved-corner interiors constructed of 18 gauge stainless steel. Exterior body constructed of heavy gauge, corrosion resistant steel.

Interior - CFC free foamed-in-place insulation through-out. Each pan features a 1" drain located in the center for easy cleaning, and recessed ledges for pan support.

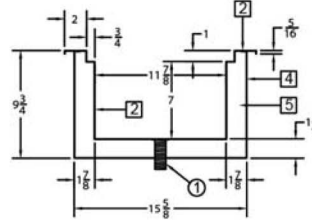


Model ICP-300SL

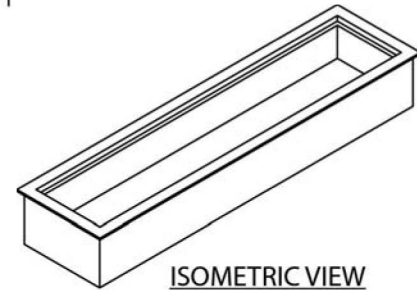
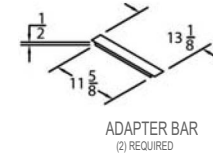
shown below



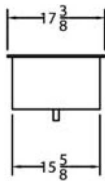
PLAN VIEW



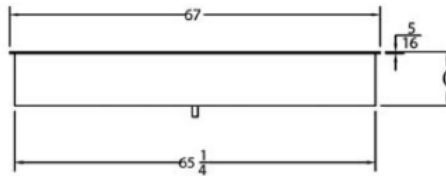
SECTION THRU



ISOMETRIC VIEW



SIDE ELEVATION



FRONT ELEVATION

Note: Specifications are subject to change without notice and are not intended for installation purposes. See installation instructions prior to installing the unit.

SPECIFICATIONS

Model Number	OVERALL DIMENSIONS			INTERIOR DIMENSIONS		CUT OUT DIMENSIONS	
	A Front to Back Inches (MM)	B Left to Right Inches (MM)	C Height Inches (MM)	D Front to Back Inches (MM)	E Left to Right Inches (MM)	Width Front to Back Inches (MM)	Length Left to Right Inches (MM)
ICP-200SL	17-3/8 (441)	46-1/4 (1175)	9-3/4 (248)	11-7/8 (302)	40-3/4 (1035)	15-7/8 (403)	44-3/4 (1137)
ICP-300SL	17-3/8 (441)	67 (1702)	9-3/4 (248)	11-7/8 (302)	61-1/2 (1562)	15-7/8 (403)	65-1/2 (1664)
ICP-400SL	17-3/8 (441)	87-3/4 (2229)	9-3/4 (248)	11-7/8 (302)	82-1/4 (2089)	15-7/8 (403)	86-1/4 (2192)

SHIPPING INFORMATION

Model Number	WEIGHTS		CARTON DIMENSIONS			CRATE SIZE	
	SHIPPING WEIGHT POUNDS (KG)	INSTALLED WEIGHT POUNDS (KG)	WIDTH Inches (MM)	DEPTH Inches (MM)	HEIGHT Inches (MM)	CUBIC FEET	CUBIC METERS
ICP-200SL	60.7 (27.5)	58.7 (26.6)	18-7/8 (479)	47-1/4 (1200)	18 (457)	9.2	0.26
ICP-300SL	64.7 (29.4)	62.3 (28.3)	18-7/8 (479)	68 (1727)	18 (457)	13.3	0.38
ICP-400SL	86 (39.0)	83.3 (37.8)	18-7/8 (479)	88-3/4 (2254)	18 (457)	17.4	0.5