


MAX-FRESH
HOT/COLD SYSTEMS

Model ICP-100

Ice Pans Non-Refrigerated Cold Pans

Model

ICP-100

ICP-200

ICP-300

ICP-400

ICP-500

ICP-600

STANDARD FEATURES

- ☐ Drop-in design
- ☐ NSF-2 compliant
- ☐ Hold standard 12" by 20" food pans and fractional sized pans
- ☐ 18 gauge stainless steel top and liner for maximum strength and durability
- ☐ 1" drains per well for ease of cleaning
- ☐ Perforated bottom strainer plate conveniently holds ice above drain for ease of cleaning
- ☐ CFC free fully insulated
- ☐ Foamed-in place insulation keeps food cold while saving energy
- ☐ Recessed ledge for pan support and colder, fresher products
- ☐ Limited 1 year parts and labor warranty

OPTIONS & ACCESSORIES

- ☐ Divider bars for fractional pans

DESCRIPTION

USECO Non-Refrigerated Drop-In Ice Pans are designed to hold pre-chilled food products at serving temperatures. All models are completely self-contained in one to six-well models featuring CFC free insulation. Recessed top ledges lowers inset pans; keeping food colder and fresher and meet NSF-2 guidelines.

SPECIFICATIONS

Exterior - One-piece top flange and coved-corner interiors constructed of 18 gauge stainless steel. Exterior body constructed of heavy gauge, corrosion resistant steel.

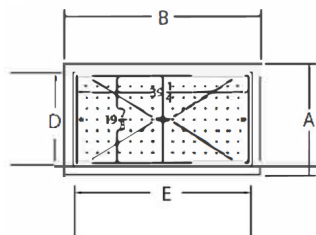
Interior - CFC free foamed-in-place insulation through-out. Each pan features a 1" drain located in the center for easy cleaning, and recessed ledges for pan support.



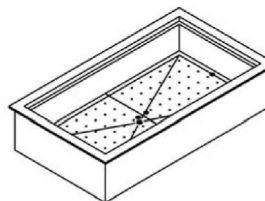
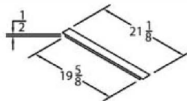
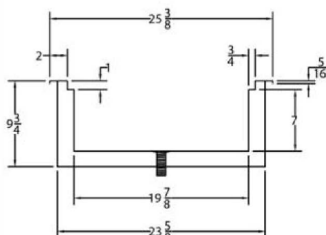
USECO 735 Florence Road, Savannah, TN 38372
 (800) 251-3398 / Fax 731-925-2840 / www.useco.com

Model ICP-300

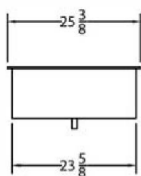
shown below



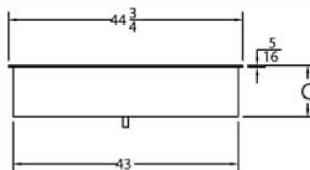
PLAN VIEW



Note: Specifications are subject to change without notice and are not intended for installation purposes. See installation instructions prior to installing the unit.



SIDE ELEVATION



FRONT ELEVATION

SPECIFICATIONS

Model Number	OVERALL DIMENSIONS			INTERIOR DIMENSIONS		CUT OUT DIMENSIONS	
	A Front to Back Inches (MM)	B Left to Right Inches (MM)	C Height Inches (MM)	D Front to Back Inches (MM)	E Left to Right Inches (MM)	Width Front to Back Inches (MM)	Length Left to Right Inches (MM)
ICP-100	25-3/8 (645)	17-3/8 (441)	9-3/4 (248)	19-7/8 (505)	11-7/8 (301)	23-7/8 (606)	15-7/8 (403)
ICP-200	25-3/8 (645)	31 (787)	9-3/4 (248)	19-7/8 (505)	25-1/2 (648)	23-7/8 (606)	29-1/2 (749)
ICP-300	25-3/8 (645)	44-3/4 (1137)	9-3/4 (248)	19-7/8 (505)	39-1/4 (997)	23-7/8 (606)	43-1/4 (1099)
ICP-400	25-3/8 (645)	58-1/2 (1486)	9-3/4 (248)	19-7/8 (505)	53 (1346)	23-7/8 (606)	57 (1448)
ICP-500	25-3/8 (645)	72-1/4 (1847)	9-3/4 (248)	19-7/8 (505)	66-3/4 (1695)	23-7/8 (606)	70-3/4 (1797)
ICP-600	25-3/8 (645)	86 (2184)	9-3/4 (248)	19-7/8 (505)	80-1/2 (2045)	23-7/8 (606)	84-1/2 (2146)

SHIPPING INFORMATION

Model Number	WEIGHTS		CARTON DIMENSIONS			CRATE SIZE	
	SHIPPING WEIGHT POUNDS (KG)	INSTALLED WEIGHT POUNDS (KG)	WIDTH Inches (MM)	DEPTH Inches (MM)	HEIGHT Inches (MM)	CUBIC FEET	CUBIC METERS
ICP-100	29.7 (13.5)	28.0 (12.7)	19 (482)	27 (686)	32 (813)	9.5	0.27
ICP-200	60.7 (27.5)	58.7 (26.6)	27 (686)	32 (813)	32 (813)	16.0	0.46
ICP-300	64.7 (29.4)	62.3 (28.3)	27 (686)	46 (1168)	32 (813)	23.0	0.65
ICP-400	86.0 (39.0)	83.3 (37.8)	27 (686)	60 (1524)	32 (813)	30.0	0.85
ICP-500	92.7 (42.1)	89.7 (40.7)	27 (686)	73 (1854)	32 (813)	36.5	1.04
ICP-600	96.7 (43.9)	93.3 (42.4)	27 (686)	87 (2210)	32 (813)	43.5	1.23