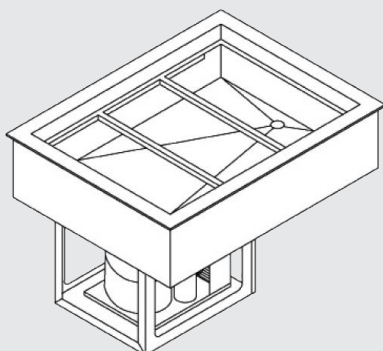



**MAX-FRESH**  
**HOT/COLD SYSTEMS**

**Model AFCP-343**

## Refrigerated Cold Pans Extra Capacity 4/3 Pans Models

### Model

AFCP-143

AFCP-243

AFCP-343

AFCP-443

AFCP-543

AFCP-643

### STANDARD FEATURES

- ☐ NSF-7 compliant with 1" recessed top edge
- ☐ Self contained drop-in design
- ☐ Each well holds 4 each 3rd size pans or equivalent fractional sized pans per well
- ☐ 18 gauge stainless steel top and liner for maximum strength and durability
- ☐ 1" drains for ease of cleaning
- ☐ On-off switch with 8 ft cord & plug for ease of installation and operation
- ☐ Type 134A and type 404A CFC free refrigerant
- ☐ Fully insulated, CFC free, foamed-in place insulation keeps food cold while saving energy
- ☐ Recessed ledge for pan support and colder, fresher products
- ☐ Quick & easy service with sight glass, service valves, filter/dryer and receiver
- ☐ Limited 1 year parts & labor warranty

### OPTIONS & ACCESSORIES

- ☐ Perforated bottom strainer plate conveniently holds ice above drain to prevent clogging
- ☐ Adaptor bars for fractional sized pans
- ☐ Remote on/off switch
- ☐ 220/230/240V
- ☐ 50 cycle
- ☐ Remote models with or without condensing units

### DESCRIPTION

USECO Refrigerated Drop-In Cold Pans hold pre-chilled food products at cold, fresh and safe serving temperatures. All models are completely self-contained in one to six-pan models with individual thermostatic controls, are CFC free and include an 8 ft. 120V cord and plug. Pans are recessed 1" to comply with NSF-7 performance requirements. Each well holds 4 each 3rd size pans or equivalent fractional sized pans.

### SPECIFICATIONS

**Exterior** – One-piece top flange and coved-corner interiors constructed of 18 gauge stainless steel. Exterior body constructed of heavy gauge, corrosion resistant steel. Condensing unit mounted on corrosion resistant frame below the cold pan.

**Interior** – CFC free foamed-in-place insulation through-out, 1" drain located in the center for easy cleaning. Ledge is recessed 3" to comply with NSF-7 requirements, allowing a layer of air to insulate food and for pan support.

**Refrigeration** – Air cooled, type 134A or 404A CFC free refrigerant system featuring wrapped coil construction on both sides and bottom, individual thermostats, on/off switch, 8 ft. cord and plug set NEMA 5-15P (120V models). Refrigeration system features sight glass, easy service valves, dryer/filter and receiver.



USECO 735 Florence Road, Savannah, TN 38372  
 (800) 251-3398 / Fax 731-925-2840 / www.useco.com

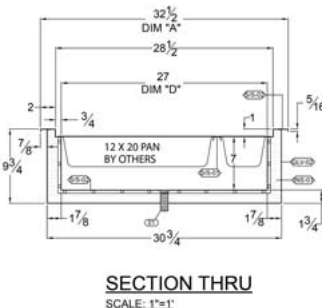
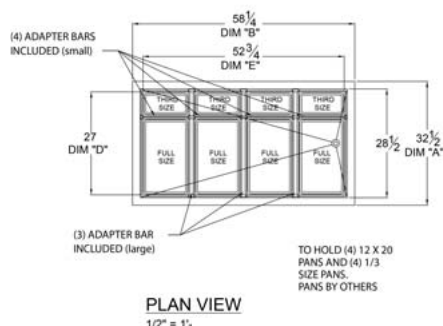
## Refrigerated Cold Pans Extra Capacity 4/3 Pans Models

FOODSERVICE SOLUTIONS

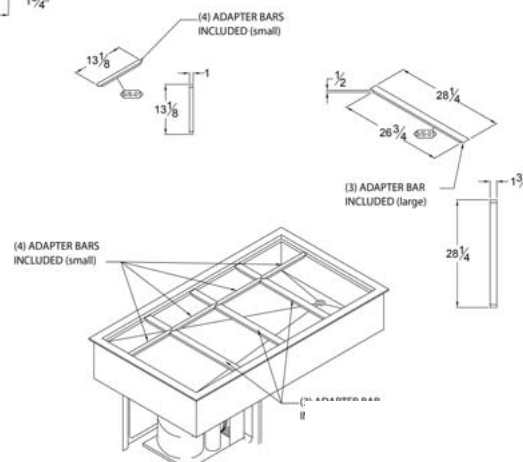
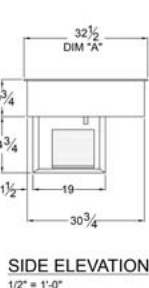
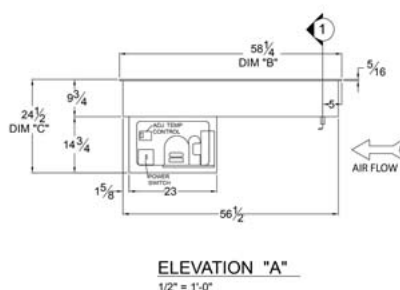
☐ AFCP-143   ☐ AFCP-243   ☐ AFCP-343   ☐ AFCP-443   ☐ AFCP-543   ☐ AFCP-643

## Model AFCP-443

shown below



**Note:** Specifications are subject to change without notice and are not intended for installation purposes. See installation instructions prior to installing the unit.



## SPECIFICATIONS

	OVERALL DIMENSIONS			INTERIOR DIMENSIONS		CUT OUT DIMENSIONS	
Model Number	A Front to Back Inches (MM)	B Left to Right Inches (MM)	C Height Inches (MM)	D Front to Back Inches (MM)	E Left to Right Inches (MM)	Width Front to Back Inches (MM)	Length Left to Right Inches (MM)
AFCP-143	32-1/2 (825.5)	17-3/8 (442)	24-1/2 (623)	27 (686)	11-7/8 (302)	31 (788)	15-7/8 (404)
AFCP-243	32-1/2 (825.5)	31 (788)	24-1/2 (623)	27 (686)	25-1/2 (648)	31 (788)	29-1/2 (750)
AFCP-343	32-1/2 (825.5)	44-5/8 (1134)	24-1/2 (623)	27 (686)	39-1/8 (994)	31 (788)	43-1/8 (1096)
AFCP-443	32-1/2 (825.5)	58-1/4 (1480)	24-1/2 (623)	27 (686)	52-3/4 (1340)	31 (788)	56-3/4 (1442)
AFCP-543	32-1/2 (825.5)	71-7/8 (1826)	24-1/2 (623)	27 (686)	66-3/8 (1686)	31 (788)	70-3/8 (1788)
AFCP-643	32-1/2 (825.5)	85-1/2 (2172)	24-1/2 (623)	27 (686)	80 (2032)	31 (788)	84 (2134a)

## SHIPPING INFORMATION

	WEIGHTS		CARTON DIMENSIONS			CRATE SIZE	
Model Number	SHIPPING WEIGHT POUNDS (KG)	INSTALLED WEIGHT POUNDS (KG)	WIDTH Inches (MM)	DEPTH Inches (MM)	HEIGHT Inches (MM)	CUBIC FEET	CUBIC METERS
AFCP-143	114 (52)	104 (47)	34-1/8 (867)	18-3/8 (767)	32 (813)	11.6	0.31
AFCP-243	232 (105)	216 (98)	34-1/8 (867)	32 (813)	32 (813)	20.2	0.57
AFCP-343	269 (122)	247 (112)	34-1/8 (867)	45-5/8 (1159)	32 (813)	28.8	0.81
AFCP-443	358 (162)	330 (150)	34-1/8 (867)	59-1/4 (1505)	32 (813)	37.4	1.06
AFCP-543	403 (183)	369 (167)	34-1/8 (867)	72-7/8 (1851)	32 (813)	46.1	1.30
AFCP-643	440 (200)	400 (181)	34-1/8 (867)	86-1/2 (2197)	32 (813)	54.7	1.55

## POWER SUPPLY- REFRIGERATION OPERATION

Model Number	VOLTS	HP	AMPS	PHASE	POWER SUPPLY	Refrigerant
AFCP-143	115	1/4	4.9	SINGLE	NEMA 5-15P	134A
AFCP-243	115	1/4	4.9	SINGLE	NEMA 5-15P	134A
AFCP-343	115	1/3	5.6	SINGLE	NEMA 5-15P	404A
AFCP-443	115	1/2	6.4	SINGLE	NEMA 5-15P	404A
AFCP-543	115	3/4	7.2	SINGLE	NEMA 5-15P	404A
AFCP-643	115	3/4	7.2	SINGLE	NEMA 5-15P	404A



5-15P