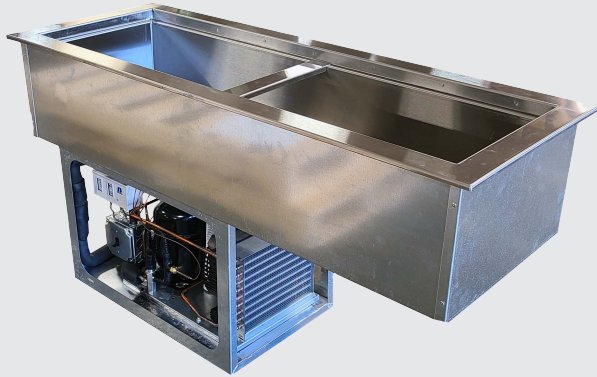



MAX-FRESH
HOT/COLD SYSTEMS

Model AFCP-2SL

Slim Line Refrigerated Cold Pans

Model

AFCP-2SL

AFCP-3SL

AFCP-4SL

STANDARD FEATURES

- ☐ 1" recessed top edge to comply with NSF-7 requirements
- ☐ Self contained drop-in design
- ☐ Hold standard 12" by 20" food pans and fractional sized pans
- ☐ Meets NSF Standard 7
- ☐ Stainless steel top and liner for maximum strength and durability
- ☐ 1" drains for ease of cleaning
- ☐ On-off switch with 8 ft. cord & plug for ease of installation and operation
- ☐ Type 134A or 404A CFC free refrigerant
- ☐ Fully insulated, CFC free, foamed-in place insulation keeps food cold while saving energy
- ☐ Recessed ledge for pan support and colder, fresher products
- ☐ Quick & easy service with sight glass, service valves, filter/dryer and receiver
- ☐ Limited 1 year parts and labor warranty

OPTIONS & ACCESSORIES

- ☐ Perforated bottom strainer plate conveniently holds ice above drain to prevent clogging
- ☐ Adaptor bars for fractional sized pans
- ☐ Remote on/off switch
- ☐ 220/230/240V
- ☐ 50 cycle
- ☐ Remote models with or without condensing units

DESCRIPTION

USECO Refrigerated Slim Line Drop-In Cold Pans are designed for narrow counters and hold pre chilled food products at cold, fresh and safe serving temperatures. All models are completely self-contained in two, three or four-well models and are CFC free. Pans are recessed 3" to comply with NSF-7 performance requirements. Includes an 8 ft. 120V cord and plug (120V models).

SPECIFICATIONS

Exterior – One-piece top flange and coved-corner interiors constructed of 18 gauge stainless steel. Exterior body constructed of heavy gauge, corrosion resistant steel. Condensing unit mounted on corrosion resistant frame below the cold pan.

Interior – CFC free foamed-in-place insulation through-out, 1" drain located in the center for easy cleaning. Ledge is recessed 3" to comply with NSF-7 requirements, allowing a layer of air to insulate food and for pan support.

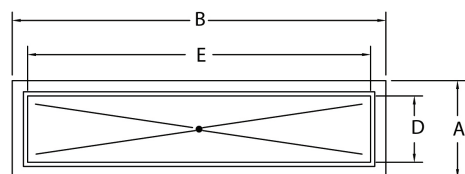
Refrigeration – Air cooled, type 134A or 404A CFC free refrigerant system featuring wrapped coil construction on both sides and bottom, individual thermostats, on/off switch, 8 ft. cord and plug set NEMA 5-15P (120V models). Refrigeration system features sight glass, easy service valves, dryer/filter and receiver.



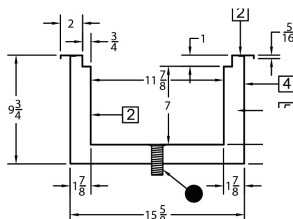
USECO 735 Florence Road, Savannah, TN 38372
 (800) 251-3398 / Fax 731-925-2840 / www.useco.com

Model AFCP-3SL

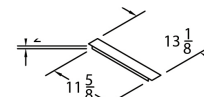
shown below



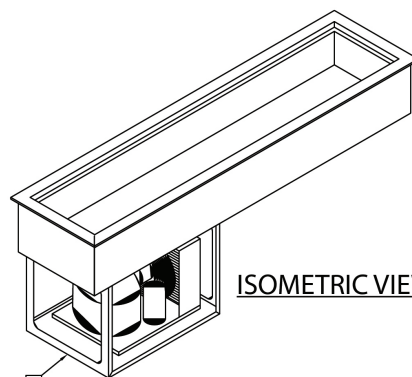
PLAN VIEW



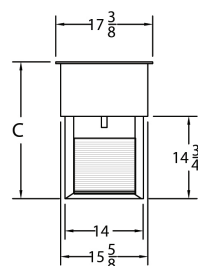
SECTION THRU



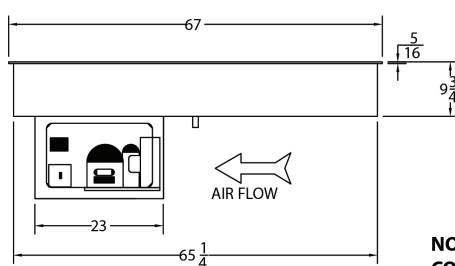
ADAPTER BAR
(1) REQ'D



ISOMETRIC VIEW



SIDE ELEVATION



FRONT ELEVATION
OPERATOR SIDE

NOTE:
CONTROL IS LOCATED
ON OPERATOR SIDE

Note: Specifications are subject to change without notice and are not intended for installation purposes. See installation instructions prior to installing the unit.

SPECIFICATIONS

Model Number	OVERALL DIMENSIONS			INTERIOR DIMENSIONS		CUT OUT DIMENSIONS	
	A Front to Back Inches (MM)	B Left to Right Inches (MM)	C Height Inches (MM)	D Front to Back Inches (MM)	E Left to Right Inches (MM)	Width Front to Back Inches (MM)	Length Left to Right Inches (MM)
AFCP-2SL	17-3/8 (441)	46-1/4 (1175)	24-1/2 (622)	11-7/8 (302)	40-3/4 (1035)	15-7/8 (403)	44-3/4 (1137)
AFCP-3SL	17-3/8 (441)	67 (1702)	24-1/2 (622)	11-7/8 (302)	61-1/2 (1562)	15-7/8 (403)	65-1/2 (1664)
AFCP-4SL	17-3/8 (441)	87-3/4 (2229)	24-1/2 (622)	11-7/8 (302)	82-1/4 (2089)	15-7/8 (403)	86-1/4 (2191)

SHIPPING INFORMATION

Model Number	WEIGHTS		CARTON DIMENSIONS			CRATE SIZE	
	SHIPPING WEIGHT POUNDS (KG)	INSTALLED WEIGHT POUNDS (KG)	WIDTH Inches (MM)	DEPTH Inches (MM)	HEIGHT Inches (MM)	CUBIC FEET	CUBIC METERS
AFCP-2SL	182 (83)	176 (80)	27 (686)	32 (813)	32 (813)	16	0.45
AFCP-3SL	194 (88)	187 (85)	27 (686)	46 (1168)	32 (813)	23	0.65
AFCP-4SL	258 (117)	250 (113)	27 (686)	60 (1524)	32 (813)	30	0.85

POWER SUPPLY

Model Number	VOLTS	HP	AMPS	PHASE	POWER SUPPLY	REFRIGERANT
AFCP-2SL	115	1/4	4.9	SINGLE	NEMA 5-15P	134A
AFCP-3SL	115	1/3	5.6	SINGLE	NEMA 5-15P	404A
AFCP-4SL	115	1/2	6.4	SINGLE	NEMA 5-15P	404A



5-15P