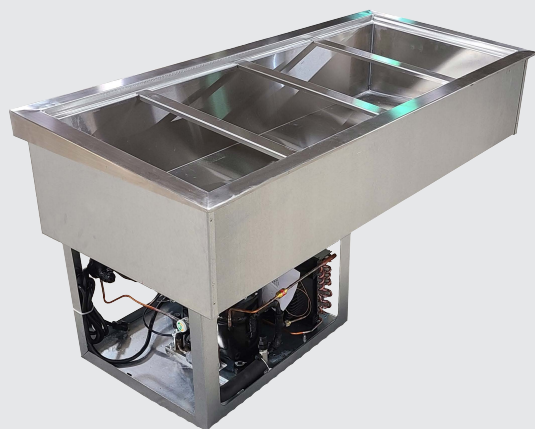



MAX-FRESH
HOT/COLD SYSTEMS

Model AFCP4-ST

Refrigerated Cold Pans With Slope Top

Model

AFCP1-ST

AFCP2-ST

AFCP3-ST

AFCP4-ST

AFCP5-ST

AFCP6-ST

STANDARD FEATURES

- ❑ Self contained drop-in design
- ❑ Features 1" deep pan rails
- ❑ Pans are raised in the rear for improved visibility and access to food products
- ❑ Hold standard 12" by 20" food pans and fractional sized pans
- ❑ Meets NSF Standard 7
- ❑ Stainless steel top and liner for maximum strength and durability
- ❑ 1" drains for ease of cleaning
- ❑ On-off switch with 8 ft. cord & plug for ease of installation and operation
- ❑ Type 134A or 404A CFC free refrigerant
- ❑ Fully insulated, CFC free, foamed-in place insulation keeps food cold while saving energy
- ❑ Recessed ledge for pan support and colder, fresher products
- ❑ Quick & easy service with sight glass, service valves, filter/dryer and receiver
- ❑ Limited 1 year parts and labor warranty

OPTIONS & ACCESSORIES

- ❑ Perforated bottom strainer plate
- ❑ Adaptor bars for fractional sized pans
- ❑ Remote on/off switch
- ❑ 220/230/240V
- ❑ 50 cycle
- ❑ Remote with or without condensing units

DESCRIPTION

USECO Refrigerated Drop-In Cold Pans with sloped tops hold pre-chilled food products at cold, fresh and safe serving temperatures. All models are completely self-contained in one to six-pan models with individual thermostatic controls, are CFC free and include an 8 ft. 120V cord and plug. The sloped top provide customers with improved visibility and access to food products.

SPECIFICATIONS

Exterior – One-piece top flange and coved-corner interiors constructed of 18 gauge stainless steel. Exterior body constructed of heavy gauge, corrosion resistant steel. Condensing unit mounted on corrosion resistant frame below the cold pan.

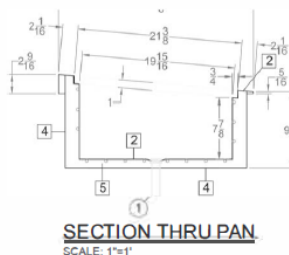
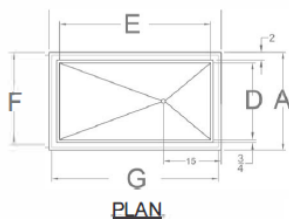
Interior – CFC free foamed-in-place insulation through-out, 1" drain located in the center for easy cleaning, and recessed ledge for pan support.

Refrigeration – Type 134A or 404A CFC free refrigerant system featuring wrapped coil construction on both sides and bottom, individual thermostats, on/off switch, 8 ft. cord and plug set NEMA 5-15P. Refrigeration system features sight glass, easy service valves, dryer/filter and receiver.

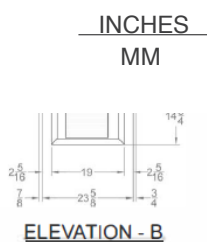
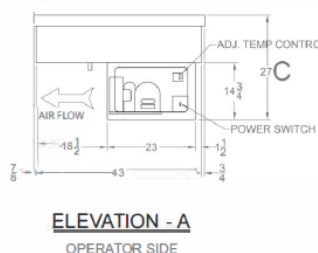


Model AFCP3-ST

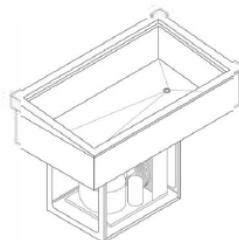
shown below



Note: Specifications are subject to change without notice and are not intended for installation purposes. See installation instructions prior to installing the unit.



NOTE: CONTROLS LOCATED ON OPERATOR (HIGH) SIDE



SPECIFICATIONS

Model Number	OVERALL DIMENSIONS			INTERIOR DIMENSIONS		CUT OUT DIMENSIONS	
	A Front to Back Inches (MM)	B Left to Right Inches (MM)	C Height Inches (MM)	D Front to Back Inches (MM)	E Left to Right Inches (MM)	F Front to Back Inches (MM)	G Left to Right Inches (MM)
AFCP1-ST	25-3/8 (645)	17-3/8 (441)	27 (686)	19-7/8 (505)	11-7/8 (302)	23-7/8 (606)	15-7/8 (454)
AFCP2-ST	25-3/8 (645)	31 (787)	27 (686)	19-7/8 (505)	25-1/2 (648)	23-7/8 (606)	29-1/2 (749)
AFCP3-ST	25-3/8 (645)	44-3/4 (1137)	27 (686)	19-7/8 (505)	39-1/4 (997)	23-7/8 (606)	43-1/4 (1099)
AFCP4-ST	25-3/8 (645)	58-1/2 (1486)	27 (686)	19-7/8 (505)	53 (1346)	23-7/8 (606)	57 (1448)
AFCP5-ST	25-3/8 (645)	72-1/4 (1835)	27 (686)	19-7/8 (505)	66-3/4 (1695)	23-7/8 (606)	70-3/4 (1796)
AFCP6-ST	25-3/8 (645)	86 (2184)	27 (686)	19-7/8 (505)	80.5 (2045)	23-7/8 (606)	84-1/2 (2146)

SHIPPING INFORMATION

Model Number	WEIGHTS		CARTON DIMENSIONS			CRATE SIZE	
	SHIPPING WEIGHT POUNDS (KG)	INSTALLED WEIGHT POUNDS (KG)	WIDTH Inches (MM)	DEPTH Inches (MM)	HEIGHT Inches (MM)	CUBIC FEET	CUBIC METERS
AFCP1-ST	89 (40)	84 (38)	19 (482)	27 (686)	32 (813)	9.5	0.27
AFCP2-ST	182 (83)	176 (80)	27 (686)	32 (813)	32 (813)	16.0	0.46
AFCP3-ST	194 (88)	187 (85)	27 (686)	46 (1168)	32 (813)	23.0	0.65
AFCP4-ST	258 (117)	250 (113)	27 (686)	60 (1524)	32 (813)	30.0	0.85
AFCP5-ST	278 (126)	269 (122)	27 (686)	73 (1854)	32 (813)	36.5	1.04
AFCP6-ST	290 (154)	280 (109)	27 (686)	87 (2210)	32 (813)	43.5	1.23

POWER SUPPLY

Model Number	VOLTS	HP	AMPS	PHASE	POWER SUPPLY	Refrigerant
AFCP1-ST	115	1/4	5.5	SINGLE	NEMA 5-15P	134A
AFCP2-ST	115	1/4	5.5	SINGLE	NEMA 5-15P	134A
AFCP3-ST	115	1/4	5.5	SINGLE	NEMA 5-15P	134A
AFCP4-ST	115	1/3	5.6	SINGLE	NEMA 5-15P	404A
AFCP5-ST	115	1/2	6.4	SINGLE	NEMA 5-15P	404A
AFCP6-ST	115	1/2	6.4	SINGLE	NEMA 5-15P	404A



5-15P