


Model AFCP1

Refrigerated Cold Pans

Model

AFCP1

AFCP2

AFCP3

AFCP4

AFCP5

AFCP6

STANDARD FEATURES

- Self contained drop-in design
- Features 1" deep pan rails
- Hold standard 12" by 20" food pans and fractional sized pans
- Meets NSF Standard 7
- Stainless steel top and liner for maximum strength and durability
- 1" drains for ease of cleaning
- On-off switch with 8 ft. cord & plug for ease of installation and operation
- Type 134A or 404A CFC free refrigerant
- Fully insulated, CFC free, foamed-in place insulation keeps food cold while saving energy
- Recessed ledge for pan support and colder, fresher products
- Quick & easy service with sight glass, service valves, filter/dryer and receiver
- Limited 1 year parts and labor warranty

OPTIONS & ACCESSORIES

- Perforated bottom strainer plate
- Adaptor bars for fractional sized pans
- Remote on/off switch
- 220/230/240V
- 50 cycle
- Remote with or without condensing units

DESCRIPTION

USECO Refrigerated Drop-In Cold Pans hold pre-chilled food products at cold, fresh and safe serving temperatures. All models are completely self-contained in one to six-pan models with individual thermostatic controls, are CFC free and include an 8 ft. 120V cord and plug.

SPECIFICATIONS

Exterior – One-piece top flange and coved-corner interiors constructed of 18 gauge stainless steel. Exterior body constructed of heavy gauge, corrosion resistant steel. Condensing unit mounted on corrosion resistant frame below the cold pan.

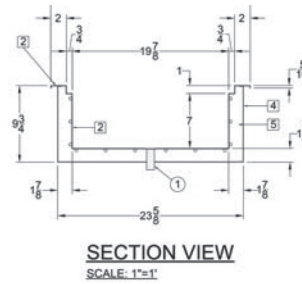
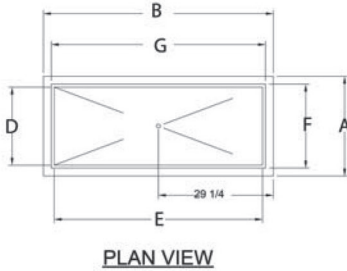
Interior – CFC free foamed-in-place insulation through-out, 1" drain located in the center for easy cleaning, and recessed ledge for pan support.

Refrigeration – Type 134A or 404A CFC free refrigerant system featuring wrapped coil construction on both sides and bottom, individual thermostats, on/off switch, 8 ft. cord and plug set NEMA 5-15P. Refrigeration system features sight glass, easy service valves, dryer/filter and receiver.



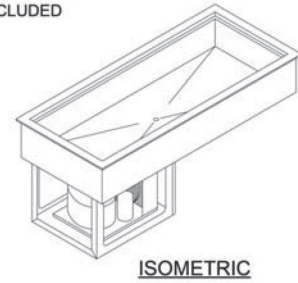
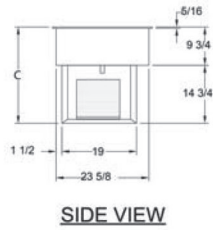
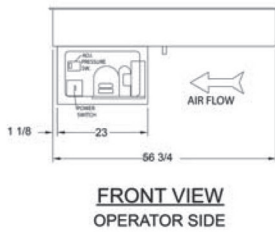
Model AFCP4

shown below



Note: Specifications are subject to change without notice and are not intended for installation purposes. See installation instructions prior to installing the unit.

INCHES
MM



SPECIFICATIONS

Model Number	OVERALL DIMENSIONS			INTERIOR DIMENSIONS		CUT OUT DIMENSIONS	
	A Front to Back Inches (MM)	B Left to Right Inches (MM)	C Height Inches (MM)	D Front to Back Inches (MM)	E Left to Right Inches (MM)	F Front to Back Inches (MM)	G Left to Right Inches (MM)
AFCP1	25-3/8 (645)	17-3/8 (441)	24.5 (622)	19-7/8 (505)	11-7/8 (301)	23-7/8 (606)	15-7/8 (403)
AFCP2	25-3/8 (645)	31 (787)	24.5 (622)	19-7/8 (505)	25-1/2 (648)	23-7/8 (606)	29-1/2 (749)
AFCP3	25-3/8 (645)	44-3/4 (1137)	24.5 (622)	19-7/8 (505)	39-1/4 (997)	23-7/8 (606)	43-1/4 (1099)
AFCP4	25-3/8 (645)	58-1/2 (1486)	24.5 (622)	19-7/8 (505)	53 (1346)	23-7/8 (606)	57 (1448)
AFCP5	25-3/8 (645)	72-1/4 (1847)	24.5 (622)	19-7/8 (505)	66-3/4 (1695)	23-7/8 (606)	70-3/4 (1797)
AFCP6	25-3/8 (645)	86 (2184)	24.5 (622)	19-7/8 (505)	80-1/2 (2045)	23-7/8 (606)	84-1/2 (2146)

SHIPPING INFORMATION

Model Number	WEIGHTS		CARTON DIMENSIONS			CRATE SIZE	
	SHIPPING WEIGHT POUNDS (KG)	INSTALLED WEIGHT POUNDS (KG)	WIDTH Inches (MM)	DEPTH Inches (MM)	HEIGHT Inches (MM)	CUBIC FEET	CUBIC METERS
AFCP1	89 (40)	84 (38)	19 (482)	27 (686)	32 (813)	9.5	0.27
AFCP2	182 (83)	176 (80)	27 (686)	32 (813)	32 (813)	16.0	0.46
AFCP3	194 (88)	187 (85)	27 (686)	46 (1168)	32 (813)	23.0	0.65
AFCP4	258 (117)	250 (113)	27 (686)	60 (1524)	32 (813)	30.0	0.85
AFCP5	278 (126)	269 (122)	27 (686)	73 (1854)	32 (813)	36.5	1.04
AFCP6	290 (154)	280 (109)	27 (686)	87 (2210)	32 (813)	43.5	1.23

POWER SUPPLY

Model Number	VOLTS	HP	AMPS	PHASE	POWER SUPPLY	Refrigerant
AFCP1	115	1/4	5.5	SINGLE	NEMA 5-15P	134A
AFCP2	115	1/4	5.5	SINGLE	NEMA 5-15P	134A
AFCP3	115	1/4	5.5	SINGLE	NEMA 5-15P	134A
AFCP4	115	1/3	6.5	SINGLE	NEMA 5-15P	404A
AFCP5	115	1/2	6.4	SINGLE	NEMA 5-15P	404A
AFCP6	115	1/2	6.4	SINGLE	NEMA 5-15P	404A



5-15P