
Model AFCP-7343

NSF-7 Refrigerated Cold Pans Extra Capacity 4/3 Pan

Model

AFCP-7143

AFCP-7243

AFCP-7343

AFCP-7443

AFCP-7543

AFCP-7643

STANDARD FEATURES

- NSF-7 compliant with 3" recessed top edge
- Self contained drop-in design
- Each well holds 4 each 3rd size pans or equivalent fractional sized pans per well
- 18 gauge stainless steel top and liner for maximum strength and durability
- 1" drains for ease of cleaning
- On-off switch with 8 ft cord & plug for ease of installation and operation
- Type 134A and type 404A CFC free refrigerant
- Fully insulated, CFC free, foamed-in place insulation keeps food cold while saving energy
- Recessed ledge for pan support and colder, fresher products
- Quick & easy service with sight glass, service valves, filter/dryer and receiver
- Limited 1 year parts & labor warranty

OPTIONS & ACCESSORIES

- Perforated bottom strainer plate conveniently holds ice above drain to prevent clogging
- Adaptor bars for fractional sized pans
- Remote on/off switch
- 220/230/240V
- 50 cycle
- Remote models with or without condensing units

DESCRIPTION

USECO Refrigerated Drop-In Cold Pans hold pre-chilled food products at cold, fresh and safe serving temperatures. All models are completely self-contained in one to six-pan models with individual thermostatic controls, are CFC free and include an 8 ft. 120V cord and plug. Pans are recessed 3" to comply with NSF-7 performance requirements.

SPECIFICATIONS

Exterior – One-piece top flange and coved-corner interiors constructed of 18 gauge stainless steel. Exterior body constructed of heavy gauge, corrosion resistant steel. Condensing unit mounted on corrosion resistant frame below the cold pan.

Interior – CFC free foamed-in-place insulation through-out, 1" drain located in the center for easy cleaning. Ledge is recessed 3" to comply with NSF-7 requirements, allowing a layer of air to insulate food and for pan support.

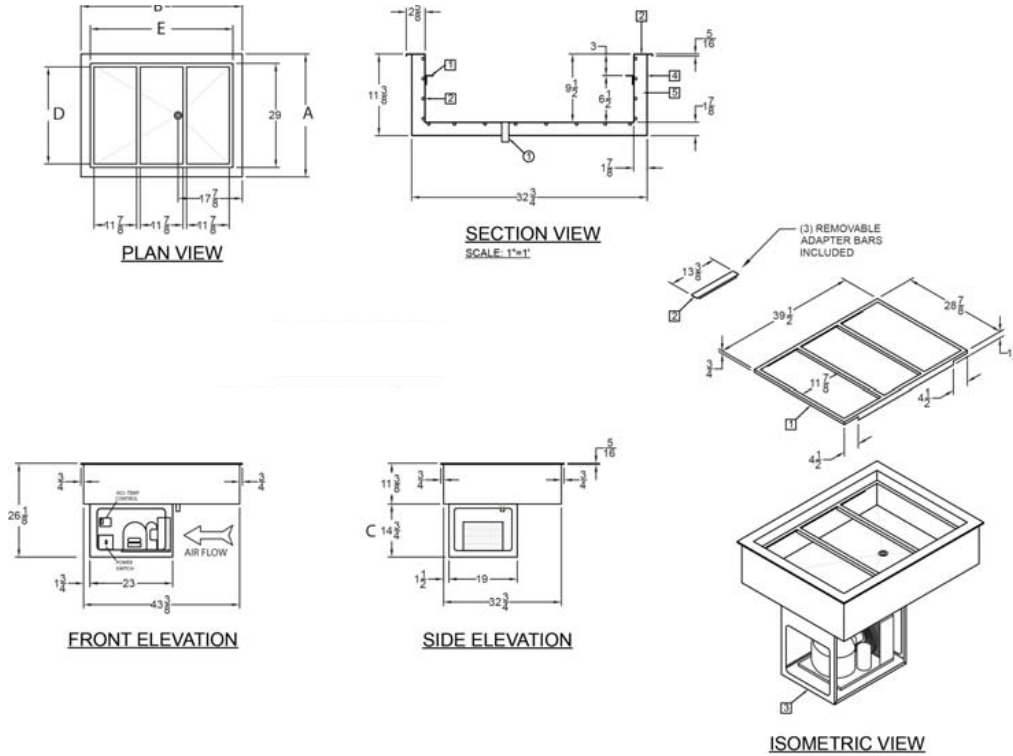
Refrigeration – Air cooled, type 134A or 404A CFC free refrigerant system featuring wrapped coil construction on both sides and bottom, individual thermostats, on/off switch, 8 ft. cord and plug set NEMA 5-15P (120V models). Refrigeration system features sight glass, easy service valves, dryer/filter and receiver.



Model AFCP-7343

shown below

Note: Specifications are subject to change without notice and are not intended for installation purposes. See installation instructions prior to installing the unit.



SPECIFICATIONS							
Model Number	OVERALL DIMENSIONS			INTERIOR DIMENSIONS		CUT OUT DIMENSIONS	
	A Front to Back Inches (MM)	B Left to Right Inches (MM)	C Height Inches (MM)	D Front to Back Inches (MM)	E Left to Right Inches (MM)	Width Front to Back Inches (MM)	Length Left to Right Inches (MM)
AFCP-7143	34-1/4 (870)	19-1/8 (486)	26-1/8 (626)	29 (737)	13-7/8 (353)	33 (839)	17-7/8 (454)
AFCP-7243	34-1/4 (870)	32-3/4 (832)	26-1/8 (664)	29 (737)	27-1/2 (699)	33 (839)	31-1/2 (826)
AFCP-7343	34-1/4 (870)	46-1/2 (1181)	26-1/8 (664)	29 (737)	41-1/4 (1048)	33 (839)	45-1/4 (1149)
AFCP-7443	34-1/4 (870)	60-1/4 (1530)	26-1/8 (664)	29 (737)	55 (1397)	33 (839)	59 (1499)
AFCP-7543	34-1/4 (870)	74 (1880)	26-1/8 (664)	29 (737)	68-3/4 (1746)	33 (839)	72-3/4 (1848)
AFCP-7643	34-1/4 (870)	87-3/4 (2229)	26-1/8 (664)	29 (737)	82-1/2 (2096)	33 (839)	86-1/2 (2197)

SHIPPING INFORMATION							
Model Number	WEIGHTS		CARTON DIMENSIONS			CRATE SIZE	
	SHIPPING WEIGHT POUNDS (KG)	INSTALLED WEIGHT POUNDS (KG)	WIDTH Inches (MM)	DEPTH Inches (MM)	HEIGHT Inches (MM)	CUBIC FEET	CUBIC METERS
AFCP-7143	115 (52)	105 (48)	21 (533)	29 (737)	32 (813)	11.3	0.31
AFCP-7243	140 (64)	124 (56)	29 (737)	34 (864)	32 (813)	18.3	0.52
AFCP-7343	175 (79)	156 (71)	29 (737)	48 (1219)	32 (813)	25.8	0.73
AFCP-7443	210 (95)	175 (79)	29 (737)	62 (1575)	32 (813)	33.3	0.94
AFCP-7543	245 (111)	194 (88)	29 (737)	76 (1930)	32 (813)	41.0	1.16
AFCP-7643	285 (129)	213 (97)	29 (737)	89 (2261)	32 (813)	47.8	1.35

POWER SUPPLY- REFRIGERATION OPERATION						
Model Number	VOLTS	HP	AMPS	PHASE	POWER SUPPLY	REFRIGERANT
AFCP-7143	115	1/4	5.5	SINGLE	NEMA 5-15P	134A
AFCP-7243	115	1/4	5.5	SINGLE	NEMA 5-15P	134A
AFCP-7343	115	1/3	6.5	SINGLE	NEMA 5-15P	404A
AFCP-7443	115	1/2	7.5	SINGLE	NEMA 5-15P	404A
AFCP-7543	115	3/4	15.8	SINGLE	NEMA 5-20P	404A
AFCP-7643	115	3/4	15.8	SINGLE	NEMA 5-20P	404A

