



MAX-FRESH
HOT/COLD SYSTEMS



Model AFCP6-7ST

NSF-7 Refrigerated Cold Pans With Slope Top

Model

AFCP1-7ST

AFCP2-7ST

AFCP3-7ST

AFCP4-7ST

AFCP5-7ST

AFCP6-7ST

STANDARD FEATURES

- 3" recessed top edge to comply with NFS-7 requirements
- Self contained drop-in design
- Pans are raised in the rear for improved visibility and access to food products
- Hold standard 12" by 20" food pans and fractional sized pans
- Meets NSF Standard 7
- Stainless steel top and liner for maximum strength and durability
- 1" drains for ease of cleaning
- On-off switch with 8 ft. cord & plug for ease of installation and operation
- Type 134A or 404A CFC free refrigerant
- Fully insulated, CFC free, foamed-in place insulation keeps food cold while saving energy
- Recessed ledge for pan support and colder, fresher products
- Quick & easy service with sight glass, service valves, filter/dryer and receiver
- Limited 1 year parts and labor warranty

OPTIONS & ACCESSORIES

- Perforated bottom strainer plate conveniently holds ice above drain to prevent clogging
- Adaptor bars for fractional sized pans
- Remote on/off switch
- 220/230/240V
- 50 cycle
- Remote models with or without condensing units

DESCRIPTION

USECO Refrigerated Drop-In Sloped Cold Pans hold pre-chilled food products at cold, fresh and safe serving temperatures. All models are self-contained in one to six-well models with individual thermostatic controls. All models are CFC free and include an 8 ft. 120V cord and plug. Pans are recessed 3" per NSF-7 performance requirements. The sloped top provides customers with improved visibility to food and access to food products.

SPECIFICATIONS

Exterior – One-piece top flange and coved-corner interiors constructed of 18 gauge stainless steel. Exterior body constructed of heavy gauge, corrosion resistant steel. Condensing unit mounted on corrosion resistant frame below the cold pan.

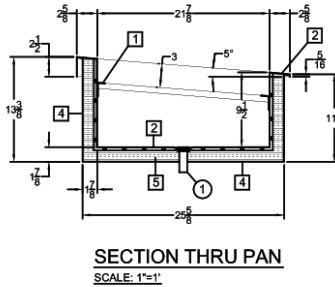
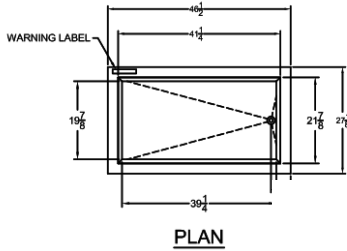
Interior – CFC free foamed-in-place insulation through-out, 1" drain located in the center for easy cleaning. Ledge is recessed 3" to comply with NSF-7 requirements, allowing a layer of air to insulate food and for pan support.

Refrigeration – Air cooled, type 134A or 404A CFC free refrigerant system featuring wrapped coil construction on both sides and bottom, individual thermostats, on/off switch, 8 ft. cord and plug set NEMA 5-15P (120V models). Refrigeration system features sight glass, easy service valves, dryer/filter and receiver.

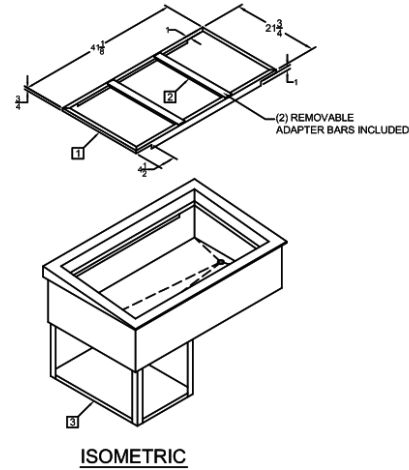
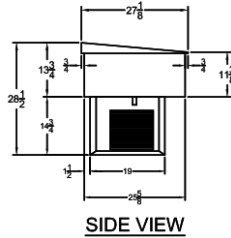
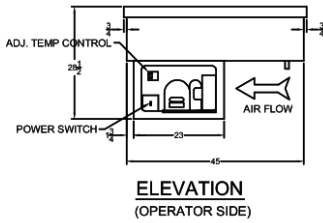


Model AFCP3-7ST

shown below



Note: Specifications are subject to change without notice and are not intended for installation purposes. See installation instructions prior to installing the unit.



SPECIFICATIONS

SHIPPING INFORMATION

Model Number	OVERALL DIMENSIONS			INTERIOR DIMENSIONS		CUT OUT DIMENSIONS	
	A Front to Back Inches (MM)	B Left to Right Inches (MM)	C Height Inches (MM)	D Front to Back Inches (MM)	E Left to Right Inches (MM)	Front to Back Inches (MM)	Left to Right Inches (MM)
AFCP1-7ST	27-1/8 (689)	19-1/8 (486)	28-1/2 (724)	21-7/8 (556)	13-7/8 (352)	25-7/8 (657)	17-7/8 (454)
AFCP2-7ST	27-1/8 (689)	32-3/4 (832)	28-1/2 (724)	21-7/8 (556)	27-1/2 (699)	25-7/8 (657)	31-1/2 (800)
AFCP3-7ST	27-1/8 (689)	46-1/2 (1181)	28-1/2 (724)	21-7/8 (556)	41-1/4 (1046)	25-7/8 (657)	45-1/4 (1149)
AFCP4-7ST	27-1/8 (689)	60-1/4 (1530)	28-1/2 (724)	21-7/8 (556)	55 (1397)	25-7/8 (657)	59 (1499)
AFCP5-7ST	27-1/8 (689)	74 (1880)	28-1/2 (724)	21-7/8 (556)	68-3/4 (1746)	25-7/8 (657)	72-3/4 (1848)
AFCP6-7ST	27-1/8 (689)	87-3/4 (2229)	28-1/2 (724)	21-7/8 (556)	82-1/2 (2096)	25-7/8 (657)	86-1/2 (2197)

Model Number	WEIGHTS		CARTON DIMENSIONS			CRATE SIZE	
	SHIPPING WEIGHT POUNDS (KG)	INSTALLED WEIGHT POUNDS (KG)	WIDTH Inches (MM)	DEPTH Inches (MM)	HEIGHT Inches (MM)	CUBIC FEET	CUBIC METERS
AFCP1-7ST	115 (52)	105 (48)	21 (533)	29 (737)	32 (813)	11.3	0.31
AFCP2-7ST	140 (64)	124 (56)	29 (737)	34 (864)	32 (813)	18.3	0.52
AFCP3-7ST	175 (79)	156 (71)	29 (737)	48 (1219)	32 (813)	25.8	0.73
AFCP4-7ST	210 (95)	175 (79)	29 (737)	62 (1575)	32 (813)	33.3	0.94
AFCP5-7ST	245 (111)	194 (88)	29 (737)	76 (1930)	32 (813)	41.0	1.16
AFCP6-7ST	285 (129)	213 (97)	29 (737)	89 (2261)	32 (813)	47.8	1.35

POWER SUPPLY

Model Number	VOLTS	HP	AMPS	PHASE	POWER SUPPLY	Refrigerant
AFCP1-7ST	115	1/4	5.5	SINGLE	NEMA 5-15P	134A
AFCP2-7ST	115	1/4	5.5	SINGLE	NEMA 5-15P	134A
AFCP3-7ST	115	1/3	6.5	SINGLE	NEMA 5-15P	404A
AFCP4-7ST	115	1/2	7.5	SINGLE	NEMA 5-15P	404A
AFCP5-7ST	115	3/4	15.8	SINGLE	NEMA 5-20P	404A
AFCP6-7ST	115	3/4	15.8	SINGLE	NEMA 5-20P	404A



5-15P